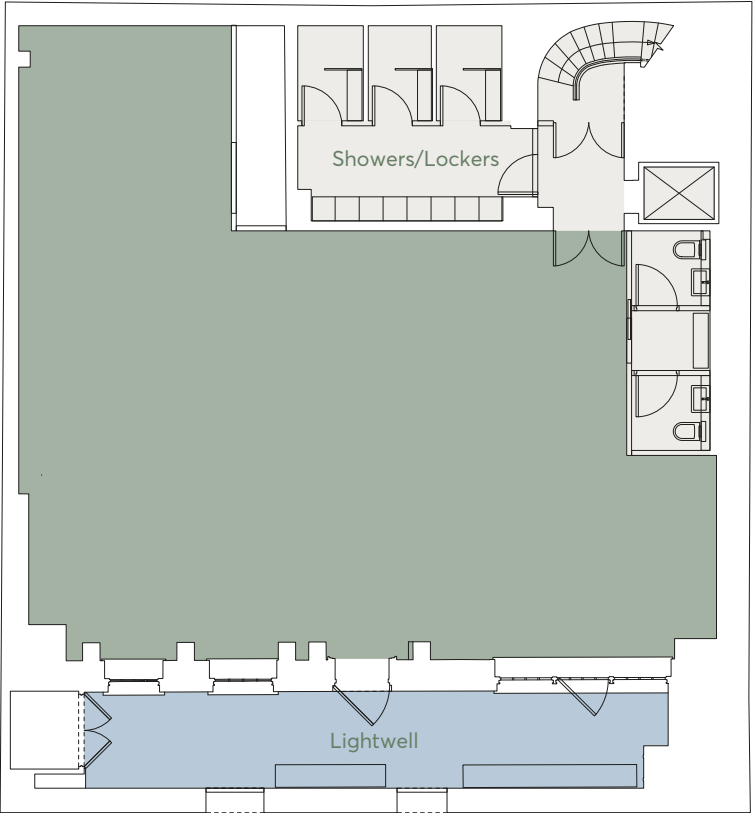


# 14 HAY'S MEWS

## LOWER GROUND FLOOR

1,385 sq ft / 128.6 sq m

Hay's Mews

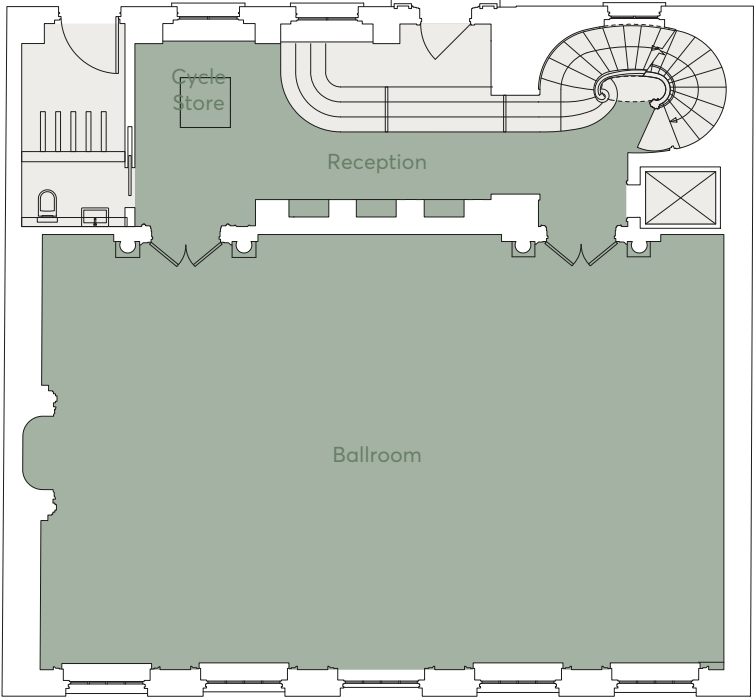


Charles Street

## GROUND FLOOR

1,429 sq ft / 132.7 sq m

Hay's Mews



Charles Street

Floor plans not to scale.  
For indicative purposes only.

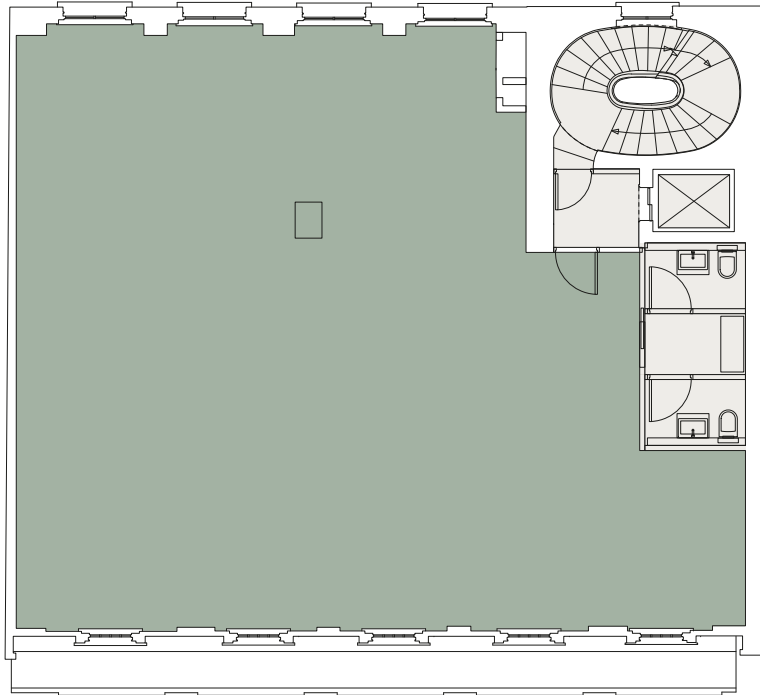


# 14 HAY'S MEWS

## SECOND FLOOR

1,499 sq ft / 139.3 sq m

Hay's Mews

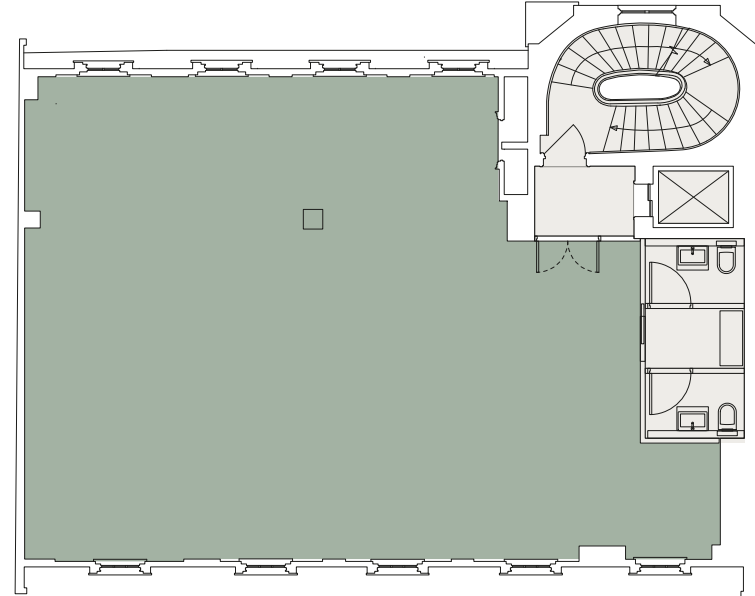


Charles Street

## THIRD FLOOR

1,178 sq ft / 109.4 sq m

Hay's Mews



Charles Street

Floor plans not to scale.  
For indicative purposes only.

Floor plans not to scale.  
For indicative purposes only.

